



HOW SPECIALTY PHARMACIES CAN HELP YOUR PATIENTS

Starting (and staying) on therapy^{1,2}

Initiating a new medication is often associated with adherence challenges. Nonadherence can result in disease progression and can negatively impact the patient's benefits from treatment.

Nonadherence is often attributed to the following:

- Prescriptions being written yet never filled¹
- Patients with chronic illnesses discontinuing their medication⁴
- Patients not perceiving the treatment as necessary³
- Patients discontinuing due to lack of side effect mitigation strategies¹



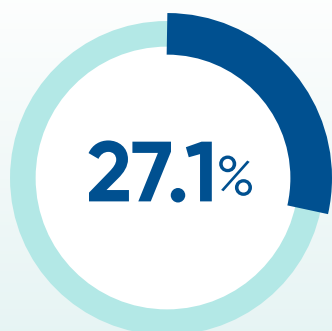
Specialty pharmacy core services

Specialty pharmacies have the staff and infrastructure to help facilitate medication adherence by regularly communicating with patients and offering support.⁵

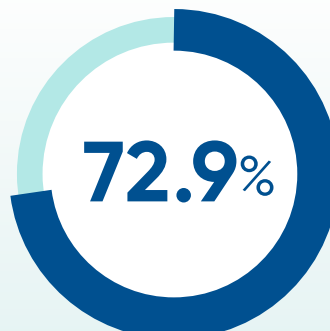
Specialty pharmacies can assist with:

- Prescription fulfillment and refills
- Direct shipments to patients, providers, or dialysis clinics
- Real-time benefits verification
- Prior authorization support
- Appeal support
- Commercial copay support
- Access to patient assistance programs

The additional support of a specialty pharmacy may help increase phosphate binder prescription refills⁶



OF NEW PRESCRIPTIONS
ARE FILLED USING A
SPECIALTY PHARMACY

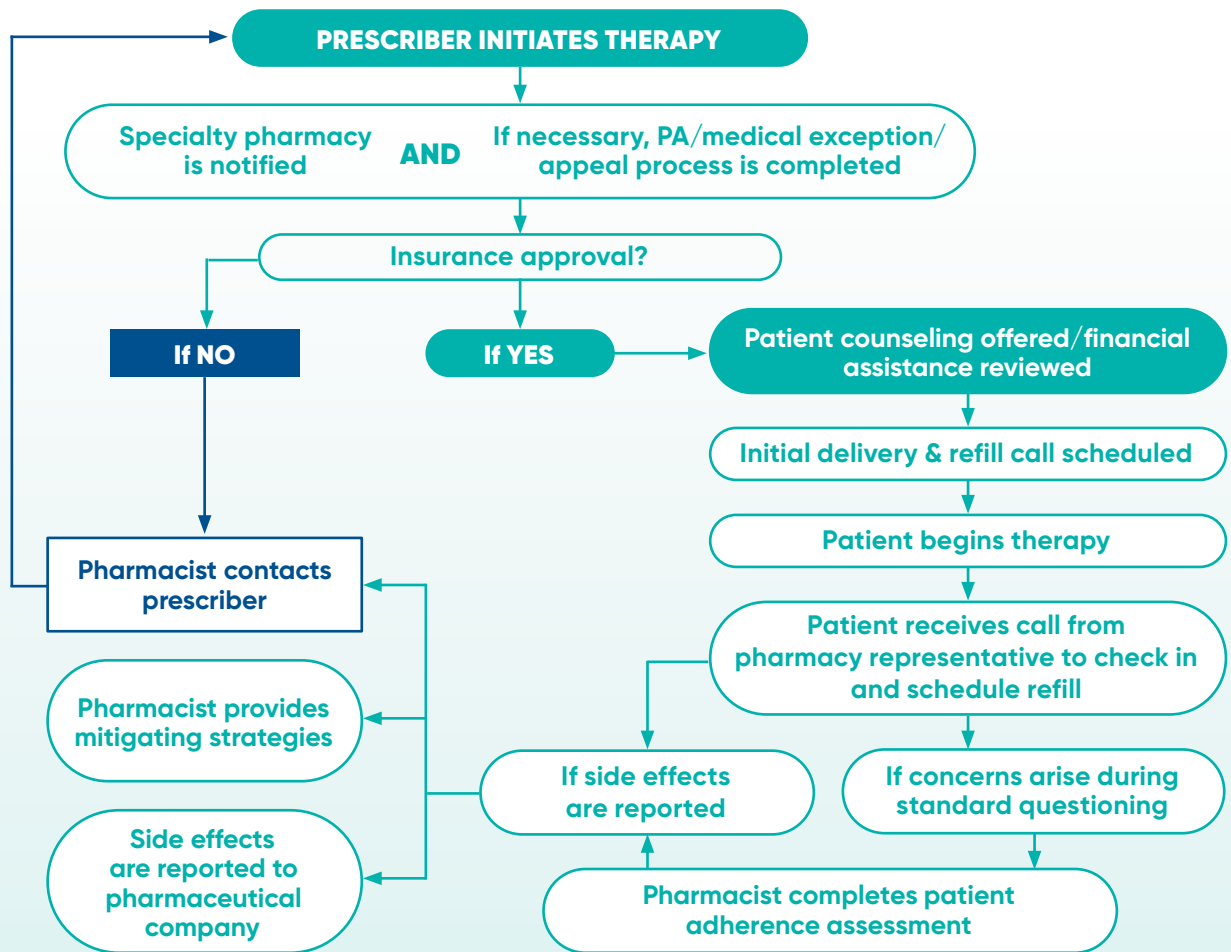


OF PRESCRIPTION REFILLS
ARE FILLED USING A
SPECIALTY PHARMACY

Patients who use specialty pharmacies maintain a high rate of prescription refills.*

*Data from a midsized dialysis organization.

SPECIALTY PHARMACY ACCESS SUPPORT⁷



PA=prior authorization.

For patients without access to a specialty pharmacy, or those who prefer retail, retail pharmacies may offer:

- Prescription fulfillment and refills for most prescription medications
- Side effects reporting to the pharmaceutical company
- Face-to-face interaction with pharmacists
- Brick-and-mortar location for patient pick-up
- Real-time benefits verification
- Commercial copay support

Locate the nearest specialty pharmacy dispensing AURYXIA[®] (ferric citrate)

Scan the QR code or visit AuryxiaRxLocator.com.

Enter your patient's ZIP code to find a location nearby.



References: 1. Ruppert T. Understanding barriers to medication adherence. U.S. Department of Health and Human Services: Centers for Disease Control and Prevention. Presented February 17, 2017. Accessed September 30, 2022. <https://www.youtube.com/watch?v=sEMCR7LhcA&feature=youtu.be> 2. Iuga AO, McGuire MJ. Adherence and health care costs. *Risk Manag Healthc Policy*. 2014;7:35-44. 3. Hugtenburg JG, Timmers L, Elders PJ, Vervloet M, van Dijk L. Definitions, variants, and cause of nonadherence with medication: a challenge for tailored interventions. *Patient Prefer Adherence*. 2013;7:675-682. 4. Kleinsinger F. The unmet challenge of medication nonadherence. *Perm J*. 2018;22:18-033. 5. Zuckerman AD, Carver A, Cooper K, et al. An integrated health-system specialty pharmacy model for coordinating transitions of care: specialty medication challenges and specialty pharmacist opportunities. *Pharmacy (Basel)*. 2019;7(4):163. 6. Data on File 35, Akebia Therapeutics, Inc. 7. Bagwell A, Kelley T, Carver A, Lee JB, Newman B. Advancing patient care through specialty pharmacy services in an academic health system. *J Manag Care Spec Pharm*. 2017;23(8):815-820.